

SIREN WATCH TRAINING



Thank you for volunteering for Siren Watch.

Donating at least fifteen minutes of your time each week will allow us to detect potential system errors as early as possible and help ensure that your neighborhood will receive adequate warning in emergencies.

Agency Mission



As a Franklin County Emergency Management and Homeland Security (FCEM&HS) volunteer, your duty supports our mission:

FCEM&HS coordinates and prepares for county-wide all hazards disaster planning, community education, warning, training, grant funding, response, and recovery efforts in order to prepare and protect the citizens of Franklin County before, during, and after natural and man-made disaster.

Your Duty



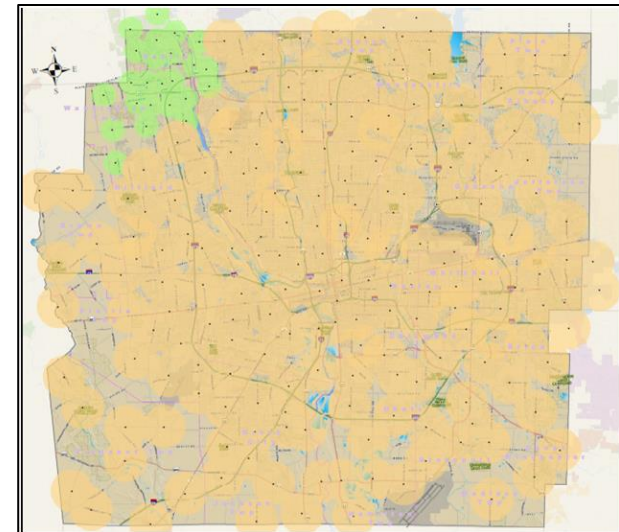
- Be in the same position every Wednesday at noon to watch your siren.
- Listen for the weekly siren test.
- Know your Siren Watch ID number.
- Use the online report form to tell us about your assigned siren within 24 hours.
- Be available to answer any questions about your report.



Outdoor Warning System



- The Outdoor Warning System consists of 195 sirens in Franklin County.
- Outdoor sirens warn people outside to seek shelter and tune into local TV and radio stations or weather radios for more information.
- Sirens are one part of the Franklin County warning system. [Visit our website](#) to learn more about our warning systems.



Siren Tests



- The Outdoor Warning Sirens are tested every Wednesday at noon, weather permitting.
- Sirens are not tested when there is a threat of severe weather.
- Each siren sounds and rotates for 20 seconds, rests for 40 seconds, sounds and rotates for 20 seconds and then stops completely.
- Go to our [Warning page](#) and click on the video to watch and hear a siren in action. The siren tone is steady for a tornado warning, but the volume rises and falls as sirens rotate 360 degrees.



Siren Tests (continue)



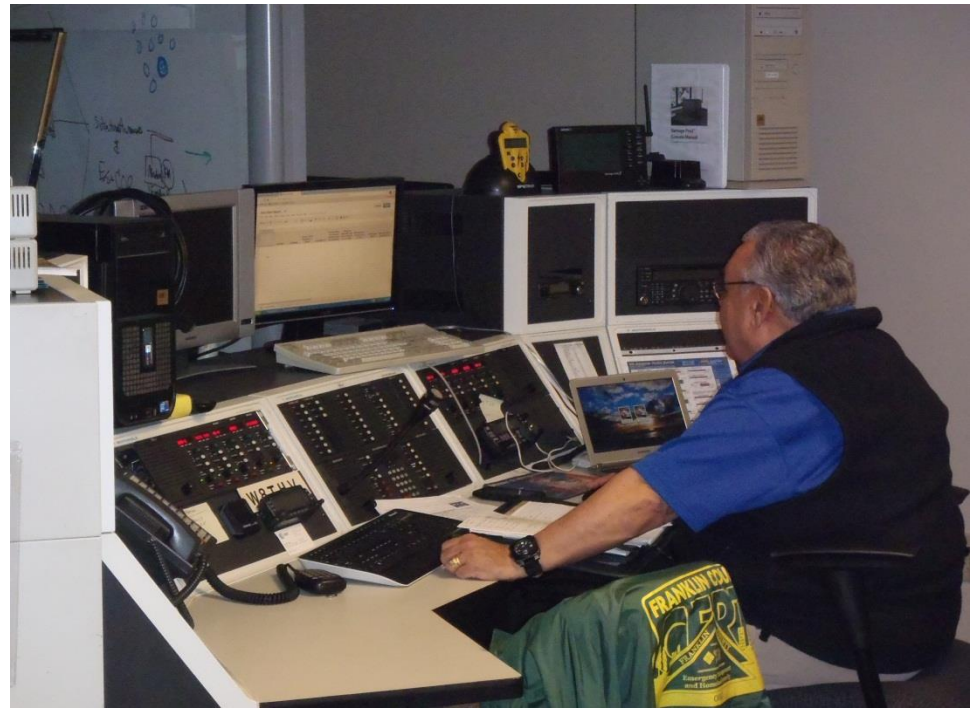
- Voice capability is tested the first Wednesday of every month.
- The voice capability allows for broadcast of verbal information.
- After the normal noon siren test, the test voice message will be broadcast four times-one time facing each of the four cardinal directions (north, east, south and west).
- Remember-when there is a threat of severe weather, sirens are not tested.

Testing Franklin County sirens, testing.

Weekly Report



- Listen for your assigned siren.
- Each Wednesday, go to the online report form within 24 hours (you will receive the Siren Watch ID number).



Weekly Report Continued



- Go to <http://fcemhs.org/CitizenPreparedness/SirenWatchProgram.aspx>

and go here:

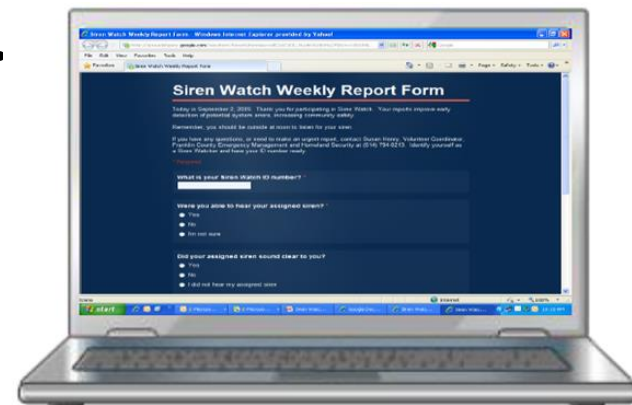


- Enter the user name: **siren**
- Enter the password: **sirenwatcher**

Weekly Report Continued



- Utilize the map to find your siren
 - Click on the “Zone” tabs
 - Click on the dot (the siren address #) to find the exact location of the siren.
 - Click on the “Submit a Report” button in the upper right corner of the mapping site.
- Fill out the Siren Watch Report.



Why the Big Rush to Report?



- The Outdoor Warning System is critical in reaching the public where no other warning system is immediately available.
- FCEM&HS Warning Manager reads these reports and utilizes our contractor to check reported siren issues.
- Our outdoor warning system must be ready for activation 24/7/365.



Siren Watch Summary?



- Go to the [Siren Watch web page](#) for more information.
- [Sign up for Siren Watch](#)
- Receive a Siren Watch ID#.
- Monitor your assigned siren each Wednesday at noon.
- Report results at the bottom of the Siren Watch web page.

Questions?



Your point of contact with FCEM&HS:



Chris Williams, Operations/Resource Manager

Angelo Nocera, Siren Watch Team Leader

Steven Smith, Operations/Warning Manager

(614)794-0213

swatche@franklincountyohio.gov

www.fcemhs.org

5300 Strawberry Farms Blvd.

Columbus, OH 43230

Office Hours are Monday to Friday

8:00 am to 5:00 pm

Thank You



Thank you again for your work as a Siren Watch volunteer. Your time and vigilance help ensure residents of Franklin County receive adequate warning in an emergency. You are a valuable member of our volunteer team.

If you have any questions, comments or concerns, or just want to introduce yourself, please contact Chris Williams.

Thank you for your volunteer service!